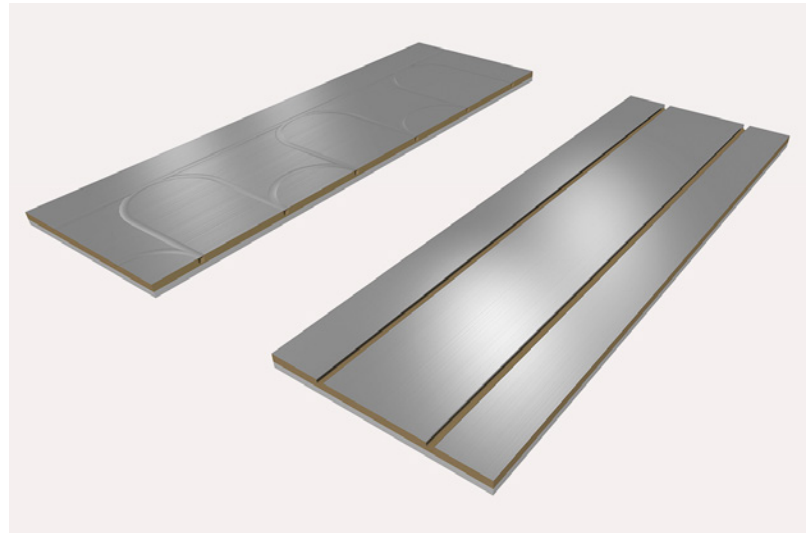


PATENTS PENDING

THERMALBOARD EPS PANELS

STRAIGHT: TBEPS0375-S2

COMBO: TBEPS035-C2



Board Construction: High Density MDF. 92% Pre-Consumer Recycled Content. Meets Grade MR30 Moisture Resistance. EPS Foam.

Nominal Dimensions: 16" x 48" x 1"

R Value: 2.25

Surface: .003 Aluminum Laminate

PEX: 3/8" Nominal

Groove Depth: 1/2"

PEX Tube Spacing: 8" OC

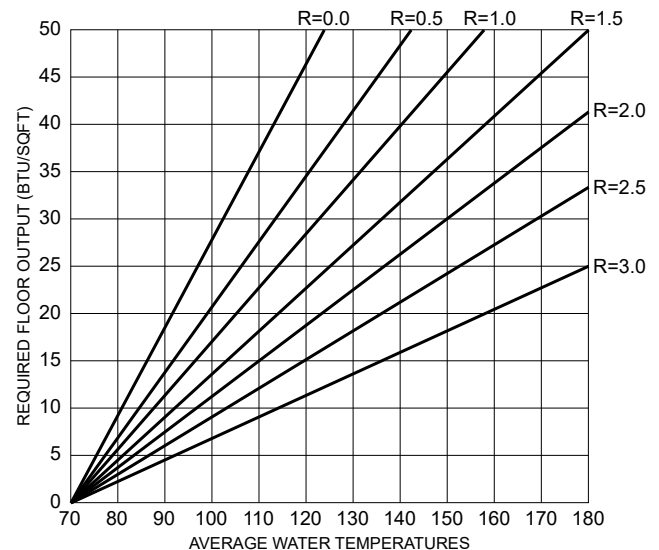
Weight: 2.6 lbs / sq. ft. 13.7 lbs / Board

Typical Board Mix: 62% Straight. 38% Curves.

Pallet Size: 4'x4'x38" Full.

Pallet Capacity: 96 Boards per Full Pallet.

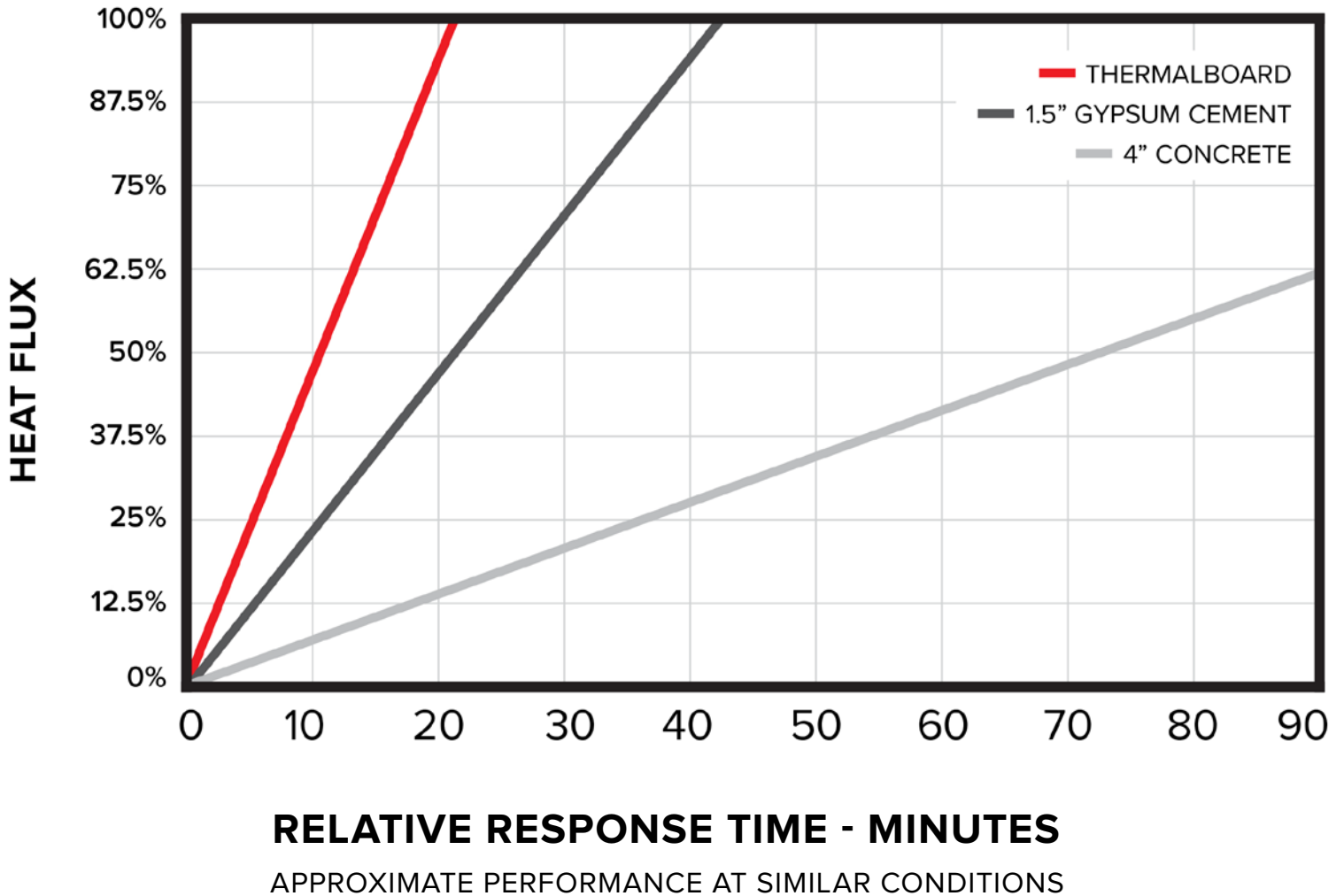
Packaging: Corner Protected. Shrink Wrapped



HOW TO USE THE PERFORMANCE CHART

Most manufacturers publish this data or it is available in this format from third-party engineers and manufacturers. The chart demonstrates the supply water temperature required to meet a given heat loss (BTU/Sq/Ft.) with a certain finished floor assembly resistance (R-Value). A low R-value of R=.05 would be tile, while a carpet with a carpet pad might be R=2.5. So for example, start at 20 BTU/Sq/Ft. on the X axis, go over to R=1 (hardwood) and go down and it will read about 105F.

THERMALBOARD EPS PERFORMANCE



Thermalboard EPS is a highly efficient, fast responding insulated radiant heat panel system. The system was designed to supply lower water temperatures – resulting in lower operating costs to the owner. Our fast response system allows for rapid heating up and cooling down for easy control and comfort.